



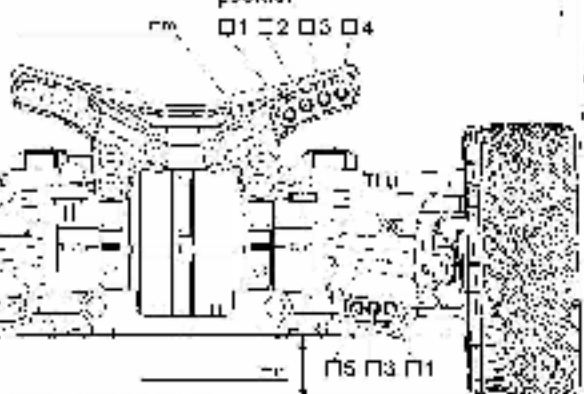
### FRONT

Upper arm position



Upper arm spacer

Damper position

 1  2  3  4


Sus. mount spacer

 L  R

Camber angle

- Front drive:  One-way  
 Fract.  
 Ball Dr.  
 Gear Diff

- Stabilizer:  1.0  
 1.2  
 1.4

Wheel spacer \_\_\_\_\_ mm



Piston \_\_\_\_\_

Oil \_\_\_\_\_

Spring \_\_\_\_\_

External \_\_\_\_\_

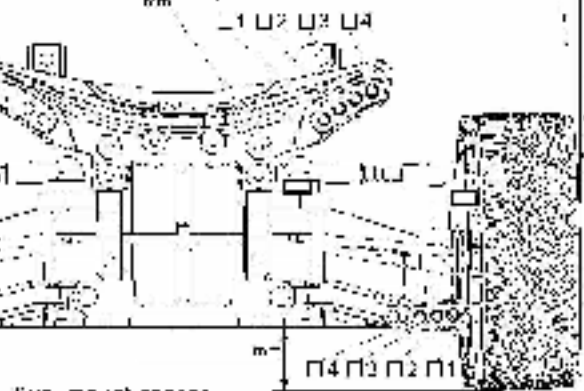
### REAR

Upper arm position



Upper arm spacer

Damper position

 1  2  3  4


Sus. mount spacer

 L  R

Camber angle

- Rear drive:  Ball Dr.  
 Gear Diff

- Stabilizer:  1.0  
 1.2  
 1.3

Wheel spacer \_\_\_\_\_ mm

Lower arm spacer \_\_\_\_\_ mm



Piston \_\_\_\_\_

Oil \_\_\_\_\_

Spring \_\_\_\_\_

External \_\_\_\_\_

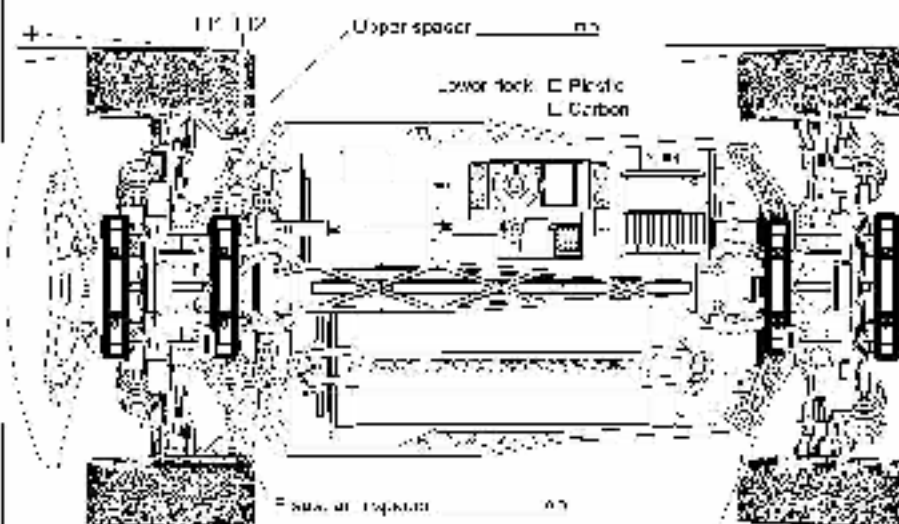
Front mount: Front \_\_\_\_\_

 Yes

Rear mount: Front \_\_\_\_\_

 Rear

Toe angle (front) \_\_\_\_\_



Upper spacer \_\_\_\_\_ mm

 Lower lock:  Plastic  
 Carbon

R sus. mt. spacer \_\_\_\_\_ mm

R sus. arm spacer \_\_\_\_\_ mm

Body \_\_\_\_\_

Wing \_\_\_\_\_

Tire \_\_\_\_\_

Wheel \_\_\_\_\_

In. rset \_\_\_\_\_

Motor \_\_\_\_\_

Spur gear \_\_\_\_\_

Pinion gear \_\_\_\_\_

Battery \_\_\_\_\_

Feet on \_\_\_\_\_